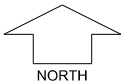


**°CELSIUS**  
LIVING



SCALE 1:250

MNG. Ref: 104753lip-011d Date: 06/11/2023

All dimensions and areas are subject to survey. The particulars on this brochure are supplied for information only and shall not be taken as a representation in any respect on the part of the Vendor or its agent. Authorities should be consulted when services are contained within lot boundaries as building restrictions may apply. All retaining walls and associated easements are shown exaggerated for clarity.

Engineering still to be finalised and subject to change.

**LEGEND**

- WATER
- WATER METER
- WATER HYDRANT
- WATER VALVE
- GAS CONNECTION
- FOOTPATH
- RETAINING WALL & HEIGHT
- 2.4M HIGH NOISE WALL ON RETAINING WALL

- POWER DOME MINI PILLAR
- POWER DOME UNIVERSAL PILLAR
- STREETLIGHTS
- PADMOUNT SITE
- SEWER / MANHOLE
- NATIONAL BROAD BAND CONNECTION
- INDICATIVE BUSHFIRE ATTACK LEVELS
  - BAL 12.5
  - BAL 19

- DRAINAGE
- TOP OF KERB HEIGHT
- SPOT LEVEL
- PAD LEVEL
- ROAD LEVEL
- GARAGE LOCATION
- QUIET HOUSE DESIGN REQUIREMENT